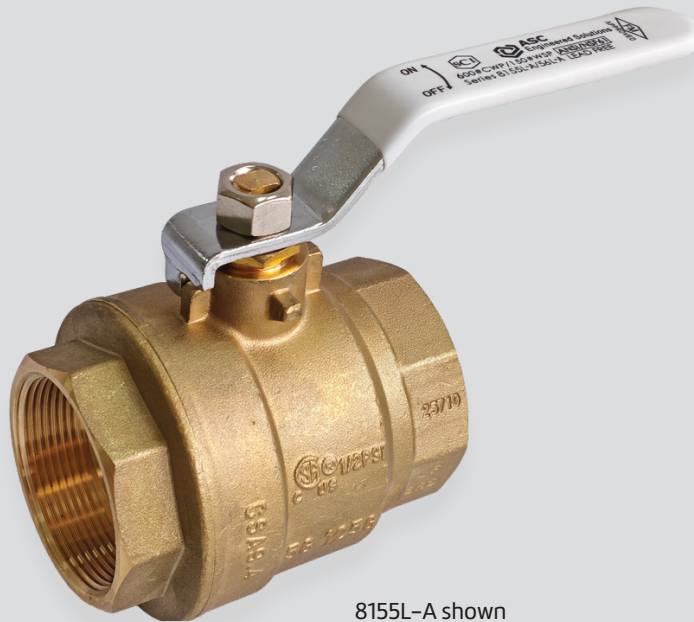


Building Connections That Last™



Series 8155L-A & Series 8156L-A

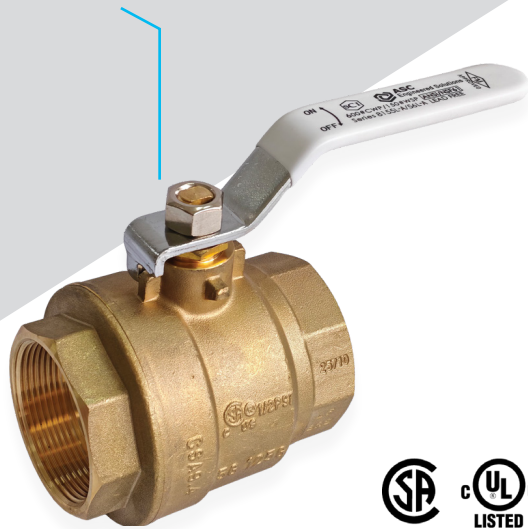
Lead-Free Brass Ball Valve,
Threaded & Solder End Datasheet



8155L-A shown



Lead-Free Brass Ball Valve, Threaded Series 8155L-A



Design Features

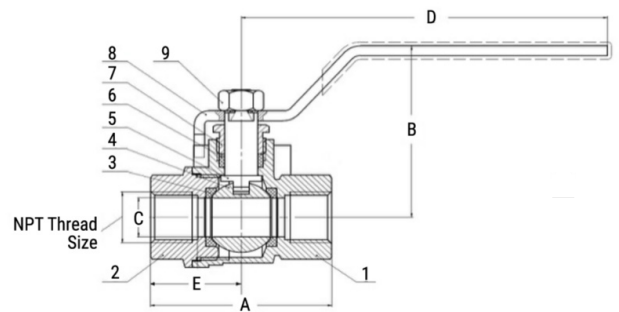
- Meets Federal Safe Water Drinking Water Act, lead-free requirement
- FNPT x FNPT, Two-Piece Brass Ball Valve, Full Port/Bore, Blowout-Proof Stem, Adjustable Packing Nut, PTFE Seats, Lever Handle
- 600 PSI CWP (1/2" - 2"), 400 PSI CWP (2 1/2" - 4")
- 150 PSI saturated steam
- Conforms to MSS-SP110
- NSF/ANSI 61 & NSF/ANSI 372
- Lead Free & Dezincification Resistant Material
- CSA - ANSI Z21.15/CGA9.1, ASME B16.44, CGA CR91-002, CAN/CGA 3.16, ASME B16.33 & ASME B16.38
- UL 1477 (YQNZ): Compressed gas shut-off, 250 PSI (1/4" - 4")
- UL 842 (YRBX): Flammable liquid shut-off, 250 PSI (1/4" - 4")
- UL 842 (YRPV): Gas shut-off valves, 250 psi (1/4" - 4")
- UL 842 (MHKZ): Manual valves, 250 psi (1/4" - 4")
- UL 125 (YSDT): LP-GAS shut-off valves, 250 psi (1/4" - 4")
- UL Subject 258 (VQGU): Trim and drain valves (1/4" - 2")
- FM Approved (1/4" - 2")

Parts & Materials

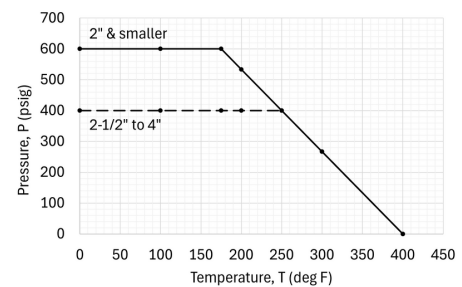
No.	Part	Material
1	Body	Brass (C46500)
2	End Cap	Brass (C46500)
3	Ball Seat	PTFE
4	Ball	Chrome Plated Brass (C46500) [1/4" - 1"], 316 SS [1 1/4" to 4"]
5	Stem	Forged Brass (C37700)
6	Stem Packing	PTFE
7	Packing Nut	Forged Brass (C37700)
8	Lever Handle	Carbon Steel (AISI 1008), Chrome Plated
9	Stem Nut	Steel, ASTM A570 Gr A, NI Plated

Dimensions

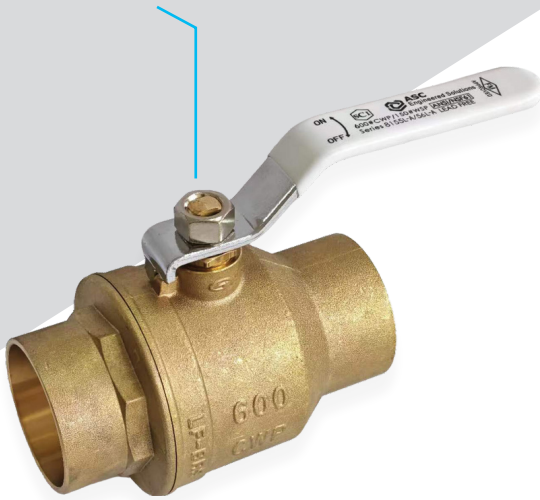
Size	Item Number	Weight	A	B	C	D	E
In		Lb	In	In	In	In	In
1/4	4347006200	0.35	1.76	1.73	0.39	3.54	0.88
3/8	4347006202	0.32	1.76	1.73	0.39	3.54	0.88
1/2	4347006204	0.46	2.05	1.94	0.58	3.54	1.02
3/4	4347006206	0.67	2.36	2.11	0.75	3.78	1.18
1	4347006208	1.09	2.76	2.58	0.94	4.53	1.38
1 1/4	4347006210	1.9	3.31	2.96	1.26	4.53	1.65
1 1/2	4347006212	2.7	3.66	3.37	1.57	5.51	1.83
2	4347006214	3.9	4.18	3.70	1.97	5.51	2.09
2 1/2	4347006216	8.2	5.38	4.80	2.52	8.66	2.69
3	4347006218	10.2	6.04	5.12	2.94	8.66	3.02
4	4347006220	21.7	7.39	6.06	3.94	9.61	3.69



Pressure-Temperature Rating Chart
Series 8155L-A & 8156L-A Brass Ball Valves



Lead-Free Brass Ball Valve, Solder Ends Series 8156L-A

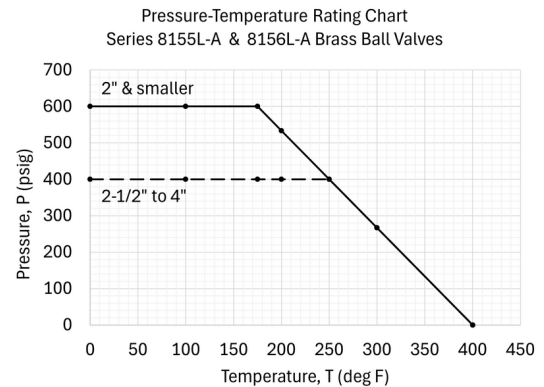
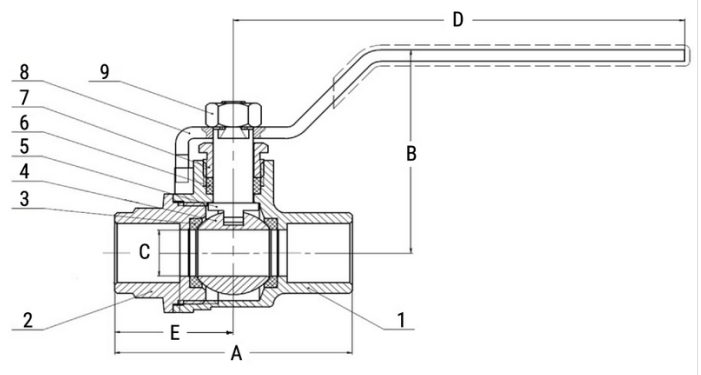


Design Features

- Meets Federal Safe Water Drinking Water Act, lead-free requirement
- Solder x Solder, Two-Piece Brass Ball Valve, Full Port/Bore, Blowout-Proof Stem, Adjustable Packing Nut, PTFE Seats, Lever Handle
- 600 PSI CWP (1/2" - 2"), 400 PSI CWP (2 1/2" - 4")
- 150 PSI saturated steam
- Conforms to MSS-SP110
- NSF/ANSI 61 & NSF/ANSI 372
- Lead Free & Dezincification Resistant Material
- FM Approved (1/2" - 2")

Parts & Materials

No.	Part	Material
1	Body	Brass (C46500)
2	End Cap	Brass (C46500)
3	Ball Seat	PTFE
4	Ball	Chrome Plated Brass (C46500) [1/2" - 1"], 316 SS [1 1/4" to 4"]
5	Stem	Forged Brass (C37700)
6	Stem Packing	PTFE
7	Packing Nut	Forged Brass (C37700)
8	Lever Handle	Carbon Steel (AISI 1008), Chrome Plated
9	Stem Nut	Steel, ASTM A570 Gr A, NI Plated



Dimensions

Size	Item Number	Weight	A	B	C	D	E
In		Lb	In	In	In	In	In
1/2	4347006400	0.43	2.10	1.84	0.58	3.54	1.08
3/4	4347006402	0.68	2.80	2.00	0.75	3.78	1.43
1	4347006404	1.03	3.30	2.45	0.94	4.53	1.65
1 1/4	4347006406	1.79	3.81	2.86	1.26	4.53	1.91
1 1/2	4347006408	2.4	4.43	3.17	1.57	5.51	2.22
2	4347006410	3.6	5.37	3.49	1.97	5.51	2.69
2 1/2	4347006412	6.9	6.28	4.80	2.52	8.66	3.14
3	4347006414	9.2	7.15	5.12	2.94	8.66	3.58
4	4347006416	16.8	9.28	6.06	3.94	9.61	4.64

About ASC Engineered Solutions

ASC Engineered Solutions is defined by quality—in its products, services and support. With more than 1,400 employees, the company's portfolio of precision-engineered piping support, valves and connections provides products to more than 4,000 customers across industries, such as mechanical, industrial, fire protection, oil and gas, and commercial and residential construction. Its portfolio of leading brands includes ABZ Valve®, AFCON®, Anvil®, Anvil EPS, Anvil Services, Basic-PSA, Beck®, Catawissa, Cooplet®, FlexHead®, FPPI®, Gruvlok®, J.B. Smith, Merit®, North Alabama Pipe, Quadrant®, SCI®, Sharpe®, SlideLOK®, SPF® and SprinkFLEX®. With headquarters in Commerce, CA, and Exeter, NH, ASC also has ISO 9001:2015 certified production facilities in PA, TN, IL, TX, AL, LA, KS, and RI.



asc-es.com

Building Connections That Last™

FC-DS-Series--8155LA--8156LA--v01 20260519

